

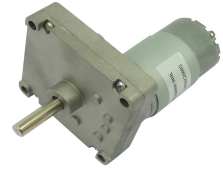


DC Gear Motor

LS-MG555

Voltage: 3VDC、6VDC、9VDC、12VDC、24VDC、36VDC

Typical applications: Central air-conditioning valve, Amusement equipment, Coinrefund devices, Grill, Oven, Peristaltic pumps, ATM bank automatic system, Robot, Medical equipment, Office equipment, Household appliances, Automatic actuator.



Electrical Specification

齿轮箱数据 Gearbox data

| 减速箱级数 Number of stages | 3 减速比 Stages reduction | 4 减速比 Stages reduction | 5 减速比 Stages reduction |
|------------------------------------|------------------------|------------------------|------------------------|
| 减速比 Reduction ratio | 13、17.5、25、39、55 | 90、128、170、190、239 | 331、478、718 |
| 最大运转力矩 Max. Running torque | 20kgf.cm | 30kgf.cm | 50kgf.cm |
| 最大破坏力矩 Max. Gear breking torque | 60kgf.cm | 90kgf.cm | 150kgf.cm |
| 最高齿轮效率 Max. Gearing efficiency | 73% | 65% | 59% |

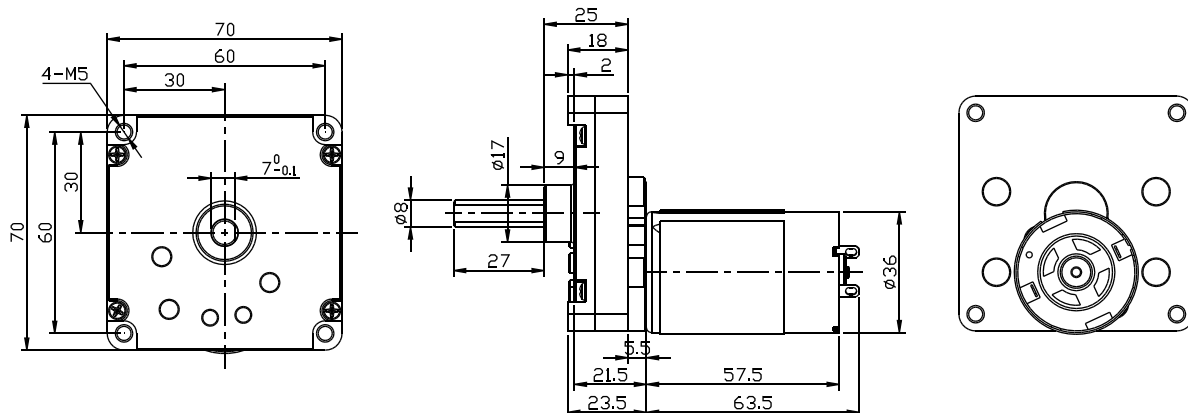
其它减速比请致电或邮件给我司技术部 Other reduction ratio please telephone or e-mail to our engineering department.

马达参数 Motor data

| 马达型号 Motor Model | 电压 Rated Volt. V | 空载 No load | | 负载 Load torque | | | | 堵转 Stall torque | |
|---------------------|------------------------|---------------|-------------|-------------------|-------------|--------------|----------------------|--------------------|---------------|
| | | 电流 Current | 转速 Speed | 电流 Current | 转速 Speed | 扭矩 Torque | 输出功率 Output power | 扭矩 Torque | 电流 Current |
| | | mA | r/min | mA | r/min | gf.cm | W | gf.cm | MA |
| MG-555123000 | 12 | ≤140 | 3000 | ≤800 | 2200 | 150 | 3.3 | 600 | 3000 |
| MG-555124500 | 12 | ≤220 | 4500 | ≤1200 | 3300 | 220 | 7.2 | 880 | 4800 |
| MG-555126000 | 12 | ≤350 | 6000 | ≤2000 | 4500 | 300 | 13.5 | 1200 | 6000 |
| MG-555243000 | 24 | ≤70 | 3000 | ≤400 | 2200 | 150 | 3.3 | 600 | 1600 |
| MG-555244500 | 24 | ≤110 | 4500 | ≤600 | 3300 | 220 | 7.2 | 880 | 3000 |
| MG-555246000 | 24 | ≤180 | 6000 | ≤1000 | 4500 | 300 | 13.5 | 1200 | 4000 |

- 马达和齿轮箱装配成减速电机后输出扭矩 = 马达扭矩X减速比X齿轮效率;输出转速 = 马达转速 / 减速比 .
- After connecting motor and gearbox which is named gearmotor the output torque: motor torque X reduction ratio X gearing efficiency; output speed: motor speed/reduction ratio .

Mechanical Dimensions



450~500g/pcs(approx)

CTN size : 55X35XH18cm 24pcs/CTN G.W.13kgs