



# Planetary Geared Stepper Motor

## LS-22PA/20BYG

Housing Material: Metal  
 Backlash at No Load:  $\leq 1.5^\circ$   
 Bearing at Output: Ball or Sleeve  
 Permissible Overhung Load:  $\leq 2.5\text{kg}$   
 Permissible Thrust Load:  $\leq 0.5\text{kg}$   
 Max.Radial Play:  $\leq 0.05\text{mm}$   
 Max.Thrust Play:  $\leq 0.3\text{mm}$



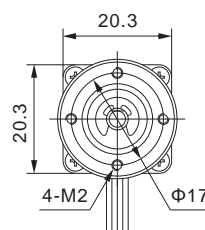
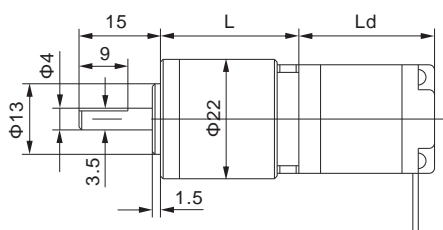
## Motor Data

Model	Step Angle	Length (Ld)	Phase Voltage	Phase Current	Phase Resistance	Phase Inductance	Holding Torque	Lead Wire
		mm	V	A	$\Omega$	mH	g.cm	
20BYGH28-020-4A/B	1.8	28	4.8	0.2	24	8	160	4
20BYGH30-050-6A/B	1.8	30	5.75	0.5	11.5	11.7	180	6
20BYGH33-060-4A/B	1.8	33	3.9	0.6	6.5	2.2	200	4
20BYGH38-060-4A/B	1.8	38	6	0.6	10	5.5	400	4

## Gearbox Data

Reduction Ratio(X:1)	4	4.75	16	19	22.56	64	76	90.25	107
Number of gear trains	1	1	2	2	2	3	3	3	3
Rated output torque(kg.cm)	100	100	200	200	200	300	300	300	300
Gear Box Length(mm)	47.5	47.5	59.5	59.5	59.5	71.5	71.5	71.5	71.5

## Mechanical Dimensions



### 4(6)Leads

