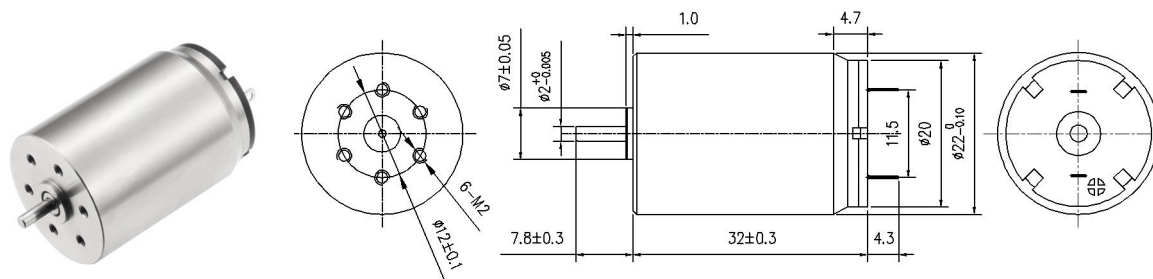




# Coreless Brush Motor

LS-2232R



Typical Applications: Tattoo machine, Robot, RC servo

电机参数 (Motor data)		33A	34A	04A	35A		
额定电压下数值 (Values at nominal voltage)							
1 额定电压 (Nominal voltage)	V	9	10	12	24		
2 空载转速 (No load speed)	rpm	10090	8800	9820	6570		
3 空载电流 (No load current)	mA	70	60	50	15		
4 额定转速 (Nominal speed)	rpm	8740	7790	8880	5740		
5 额定转矩 (最大连续转矩) (Nominal torque)	mNm	6.2	7	7	7		
6 额定电流 (最大连续电流) (Nominal current)	A	0.79	0.7	0.65	0.22		
7 堵转转矩 (Stall torque)	mNm	46.7	61	73.1	55.7		
8 堵转电流 (Stall current)	A	5.5	5.6	6.3	1.6		
9 最大效率 (Max efficiency)	%	79	82	83	80		
电机常数 (Motor constant)							
10 相间电阻 (Terminal resistance)	Ω	1.62	1.77	1.9	14.88		
11 转矩常数 (Torque constant)	mNm/A	8.35	10.64	11.44	34.19		
12 速度常数 (Speed constant)	rpm/V	1121	880	818	274		

## 其他特性参数 Other characteristic parameters

- 13 环境温度范围 (Ambient temperature) -10~40℃
- 14 绕组最高允许温度 (Max permissible winding temperature) 80℃
- 15 最高允许转速 (Max permissible speed) 20000rpm
- 16 电极磁极对数 (Number of the pole pairs) 1
- 17 换向器片数 (Number of the commutator segments) 5
- 18 电机质量 (Weight) 59.4g

## 33A电机曲线图 motor curve

