



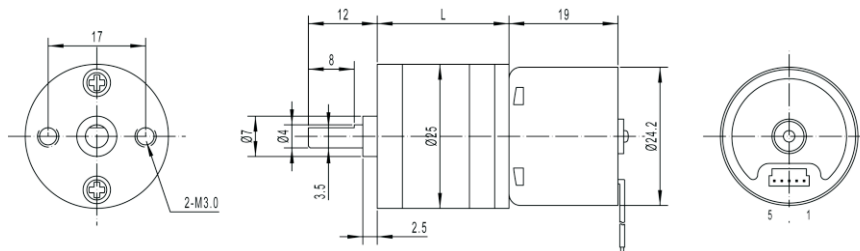
Brushless DC Gear Motor

GM25-TEC2419

- Small size dc gear motor with low speed and big torque
- 25mm gear motor provide 0.5Nm torque and more reliable
- Suitable to small diameter. Low noise and big torque application
- Reduction ratio: 4、10、21、34、45、47、73、78、103、130、172、227、378、499



Mechanical Dimensions



Gear Motor Dimensions (mm)

Electrical Specification

Motor model No.	Rated voltage	No-load speed	No-load current	Rated speed	Rated torque	Rated current	Output power	Stall torque	Stall current
	VDC	r/min	mA	r/min	g.cm	mA	W	g.cm	A
TEC2419-1262	12.0	6200	90	4800	20	180	1.4	105	0.75
TEC2419-2487	24.0	8700	70	7000	20	150	2.5	130	0.70

Gearbox with motor: GM25-370CA-22170-XXX

Reduction ratio	4	10	21	34	47	78	103	130	227	499
Length mm	19.5	21.5	21.5	23.5	23.5	25.5	25.5	27.5	27.5	29.5
No-load speed rpm	1500	600	285	175	125	78	60	47	27	12
Rated speed rpm	1200	480	230	140	100	60	47	37	21	10
Rated torque kg.cm	0.06	0.14	0.3	0.4	0.6	0.9	1.1	1.4	2.5	5
Max.momentary tolerance torque kg.cm	0.3	0.7	1.5	2.1	3.0	4.9	6	8	10	10

GM25-TEC2419-2487-XXX

Reduction ratio	4	10	21	34	47	78	103	130	227	499
Length mm	19.5	21.5	21.5	23.5	23.5	25.5	25.5	27.5	27.5	29.5
No-load speed rpm	2100	850	400	250	180	110	83	66	38	17
Rated speed rpm	1750	700	335	205	150	90	68	54	31	15
Rated torque kg.cm	0.06	0.14	0.3	0.4	0.6	0.9	1.1	1.4	2.5	5
Max.momentary tolerance torque kg.cm	0.3	0.7	1.5	2.1	3.0	4.9	6	8	10	10