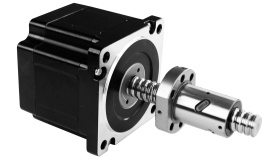




Hybrid Linear Stepper Motor

86HS1.8°(NAMA34)



Electrical Specification

技术参数 Technical parameters

型号 Model	86HS76-4560W	86HS98-4560W
相数 Number of phase	2	2
电流 Current	5.6A	5.6A
电阻 Resistance	0.35Ω	0.43Ω
电感 Inductance	2.8mH	4.0mH
转子惯量 Rotor Inertia	1400g·cm ²	1700g·cm ²
保持转矩 Holding Torque	45Kg.cm	65Kg.cm
重量 Weight	2.5Kg	3.3Kg
机身长度 Length	76mm	98mm

*Note:It's only typical technical data for reference, special requirement can be customized.

螺杆规格 Screw specification

直径 Diameter	导程 Lead length	步长 Step length	代码 Code	直径 Diameter	导程 Lead length	步长 Step length	代码 Code
Tr12	2	0.01	M	Tr15.88	12.7	0.0635	OD
Tr12	5	0.025	MB	Tr15.88	25.4	0.127	OE
Tr14	3	0.015	N	Tr16	2.5	0.0125	P
Tr14	6	0.03	NA				
Tr15.88	2.54	0.0127	O				
Tr15.88	3.175	0.015875	OA				
Tr15.88	5.08	0.0254	OB				
Tr15.88	6.35	0.03175	OC				

Tr12/Tr15.88/Tr16适用MR005-A型螺母 (可选用MR006-B型螺母)

