



AC GEAR MOTOR

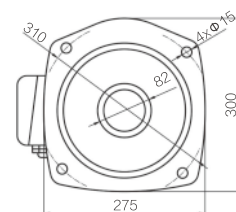
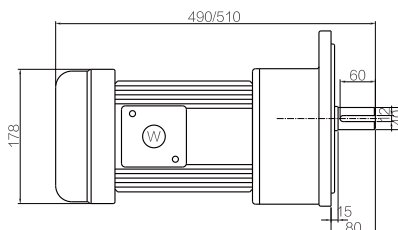
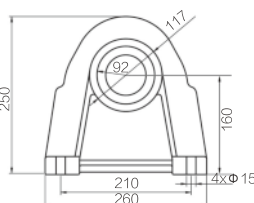
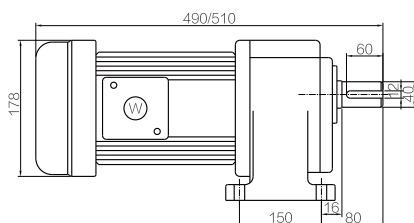
40mm Shaft 0.75-3.7KW

卧式/horizontal 立式/vertical
三相/3-phase

HOW TO ORDER

GV - 40 - 2200 - 30 - S - B

刹车选用BRAKE(Optional Function)
A:单相110/220V,50/60HZ 1-Phase
S:三相220/380V, 50/60HZ 3-Phase
减速比: Gear Ratio 1:60
马力 (W) :2200Watts 3HP
40:出力轴40mm
GV:立式 Vertical
GH:卧式 Horizontal



容许转矩 Allowable Torque 单位: N.m

公称速比 Normal speed ratio	0.75KW		1.5KW		2.2KW		3.0KW		3.7KW	
	50HZ	60HZ	50HZ	60HZ	50HZ	60HZ	50HZ	60HZ	50HZ	60HZ
	M ₂ (Nm)		M ₂ (Nm)		M ₂ (Nm)		M ₂ (Nm)		M ₂ (Nm)	
5	23.8	20.5	48.6	41.0	72.6	60.5	95.7	84.8	118.8	109.1
7	34.3	28.7	68.0	56.9	101.3	84.7	132.8	117.4	164.3	150.2
10	48.6	41.0	98.3	82.1	148.0	121.0	192.8	168.5	237.6	216.0
15	73.4	61.6	145.8	122.0	217.1	181.4	284.6	251.6	352.1	321.8
20	97.2	81.0	195.5	163.1	289.4	241.9	380.2	315.4	470.9	388.8
25	121.0	101.5	244.1	204.1	362.9	302.4	472.5	418.7	582.1	534.9
30	145.8	122.0	292.7	244.1	435.2	362.9	567.0	499.0	698.8	635.0
35	167.4	139.9	334.8	279.2	498.4	415.8	656.9	578.4	815.4	740.9
40	189.0	157.7	376.9	314.3	561.6	468.7	746.8	657.7	932.0	846.7
50	236.5	197.6	470.9	393.1	703.1	586.4	929.3	817.0	1155.6	1047.6
55	259.9	216.8	518.2	432.2	772.2	644.5	1026.9	904.3	1281.5	1164.2
65	307.5	256.9	612.2	511.0	914.0	762.3	1208.1	1062.1	1502.3	1361.9
75	354.8	296.4	706.4	589.7	1054.7	879.6	1394.0	1225.5	1733.4	1571.4
100	466.6	388.8	904.0	753.8	1360.8	1134.0	1858.7	1634.0	2311.2	2095.2

- 转速是基于电机同步转速 (50Hz:1500r/min、60Hz:1800r/min),额定负载时, 实际转速为表列转速的80%~98%。
- Spend figures are based on sychronous speed(50Hz:1500r/min、60Hz:1800r/min) the actual output speed under rated torque conditions,is about2~20% less than synchronous speed.