

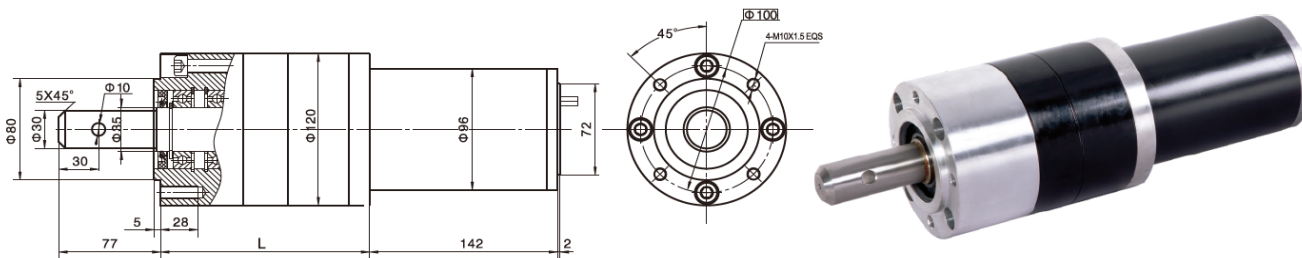


DC Planetary Gear Motor

PG120-96ZY140

Φ120行星齿轮减速器, 允许转矩范围:200 N.m
120mm OD Planetary Gearhead,
Permissible Load Range:200N.m

● 外形和安装尺寸 Dimensions



● 电动机主要技术参数 Motor Technical Data

| 电机型号 TYPE | 额定电压 Rated voltage VDC | 空载转速 No-load speed r/min | 空载电流 No-load current A | 额定转速 Rated speed r/min | 额定转矩 Rated torque mN.m | 输出功率 Output power W | 额定电流 Rated current A | 堵转力矩 Stall torque N.m | 堵转电流 Stall current A |
|--------------|------------------------------|--------------------------------|------------------------------|------------------------------|------------------------------|---------------------------|----------------------------|-----------------------------|----------------------------|
| 96ZY140-2420 | 24 | 2000 | 1.0 | 1600 | 800 | 150 | 9 | 2.9 | 27 |
| 96ZY140-2435 | 24 | 3500 | 1.8 | 2800 | 950 | 200 | 13 | 3.2 | 45 |

● 齿轮减速电机主要技术参数 Gear Motor Technical Data

配置96ZY140-2420直流电机 (96ZY140-2420 DC Motor)

| 减速比 | Reduction ratio | 4.8 | 6 | 10 | 23 | 38 | 42 | 69 | 84 | 142 | 234 | 258 | 387 | 427 |
|----------|---------------------------------------|-------|-----|-----|-----|-----|-----|-----|-----|-----|-----|-----|-----|-----|
| 减速级数 | Number of gear trains | 1 | 1 | 1 | 2 | 2 | 2 | 2 | 3 | 3 | 3 | 3 | 3 | 3 |
| 减速器长度(L) | Length(L) | mm | 119 | 119 | 119 | 153 | 153 | 153 | 153 | 182 | 182 | 182 | 182 | 182 |
| 空载转速 | No-load speed | r/min | 416 | 233 | 200 | 87 | 52 | 47 | 29 | 24 | 14 | 8.5 | 7.7 | 5.2 |
| 额定转速 | Rated speed | r/min | 333 | 266 | 160 | 70 | 42 | 38 | 23 | 19 | 11 | 6.8 | 6.2 | 4.1 |
| 额定转矩 | Rated torque | N.m | 3.4 | 4.3 | 7.2 | 15 | 24 | 27 | 44 | 49 | 83 | 136 | 150 | 200 |
| 最大瞬间允许负载 | Max. permissible load in a short time | N.m | 150 | 150 | 150 | 450 | 450 | 450 | 450 | 900 | 900 | 900 | 900 | 900 |

配置96ZY140-2435直流电机 (96ZY140-2435 DC Motor)

| 减速比 | Reduction ratio | 4.8 | 6 | 10 | 23 | 38 | 42 | 69 | 84 | 142 | 234 | 258 | 387 | 427 |
|----------|---------------------------------------|-------|-----|-----|-----|-----|-----|-----|-----|-----|-----|-----|------|-----|
| 减速级数 | Number of gear trains | 1 | 1 | 1 | 2 | 2 | 2 | 2 | 3 | 3 | 3 | 3 | 3 | 3 |
| 减速器长度(L) | Length(L) | mm | 119 | 119 | 119 | 153 | 153 | 153 | 153 | 182 | 182 | 182 | 182 | 182 |
| 空载转速 | No-load speed | r/min | 729 | 583 | 350 | 152 | 92 | 83 | 51 | 42 | 25 | 15 | 13.5 | 9 |
| 额定转速 | Rated speed | r/min | 583 | 466 | 280 | 121 | 73 | 66 | 40 | 33 | 19 | 12 | 10.8 | 7.2 |
| 额定转矩 | Rated torque | N.m | 4.1 | 5.1 | 8.5 | 17 | 29 | 32 | 53 | 58 | 98 | 162 | 178 | 268 |
| 最大瞬间允许负载 | Max. permissible load in a short time | N.m | 150 | 150 | 150 | 450 | 450 | 450 | 450 | 900 | 900 | 900 | 900 | 900 |

● 电动机特性图 Motor Characteristic Figure

