



# AC Speed Control Motor 140W

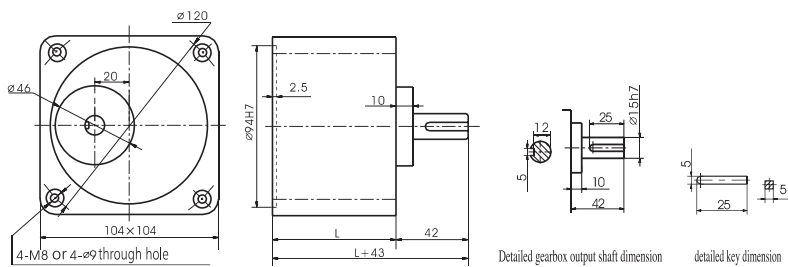


## List of Motor Characteristics

Model of Motor		Output	Voltage	Frequency	Poles	Duty	RPM	Allowable Torque				Starting Torque		Capacitor/Ve	
Motor	Motor with gear shaft	W	V	Hz	P			r/min	1200r/min		90r/min		N.m	kgf.cm	μF/VAC
									N.m	kgf.cm	N.m	kgf.cm			
6IK140RA-AF	6IK140RGU-AF	140	1ph110	50	4	CONT	90~1350	0.85	8.50	0.45	4.50	0.62	6.20	30.0/250	
6IK140RA-CF	6IK140RGU-CF	140	1ph220	50	4	CONT	90~1350	0.85	8.50	0.45	4.50	0.68	6.80	10.0/450	

●The capacitor capacitance will be different under different voltage. A correct capacitor capacitance is required to match the applied voltage. ●Wrong capacitor capacitance is the cause of trouble. You must confirm a correct voltage and select a correct model when your purchase order is placed.

## Overall Dimension of Gearbox



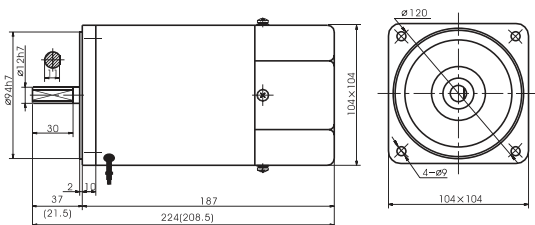
	Reduction Ratio	L(mm)	Weight (kg)
Gearbox	6GU3K-GU9K	72	1.87
	6GU10K-GU18K		2.10
	6GU20K-GU200K		2.75
Motor			5.05

## Allowable Torque on Gearbox

### Model of Gearbox: 6GU □ K

Frequency	Reduction Ratio		3	3.6	5	6	7.5	9	10	12.5	15	18	20	25	30	36	40	50	60	75	90	100	120	150
50Hz	Output Shaft Speed	r/min	500	417	300	250	200	166	150	120	100	83	75	60	50	41	37	30	25	20	16	15	12	10
	Allowable Torque	N.m	2.36	2.83	3.93	4.71	5.89	7.07	7.07	8.85	10.6	12.7	12.7	16.0	19.2	23.0	25.6	32.0	38.4	39.2	39.2	39.2	39.2	39.2
		kgf.cm	24.1	28.8	40.1	48.1	60.1	72.1	72.1	90.3	108	130	130	163	196	235	261	327	392	400	400	400	400	400
60Hz	Output Shaft Speed	r/min	600	500	360	300	240	200	180	144	120	100	90	72	60	50	45	36	30	24	20	18	15	12
	Allowable Torque	N.m	2.03	2.44	3.39	4.06	5.08	6.09	6.09	7.60	9.15	11.0	11.0	13.8	16.6	19.9	22.1	27.6	33.1	39.2	39.2	39.2	39.2	39.2
		kgf.cm	20.7	24.9	34.6	41.2	51.8	62.1	62.1	77.6	93.4	112	112	141	169	203	226	282	338	400	400	400	400	400

## Motor Overall Dimension



### Model of Gearbox: 6GU □ K

Frequency	Reduction Ratio		180	200
50Hz	Output Shaft Speed	r/min	8	7.5
	Allowable Torque	N.m	39.2	39.2
		kgf.cm	400	400
60Hz	Output Shaft Speed	r/min	10	9
	Allowable Torque	N.m	39.2	39.2
		kgf.cm	400	400

●The value in the ( ) is the value of small gear shaft motor.